



P.O. Box 459  
Woodburn, IN 46797  
Phone: (260) 632-5551  
Fax: (260) 632-1600  
[www.wcchonline.org](http://www.wcchonline.org)

## Frequently Asked Questions (FAQ)

### **Q. What is the timeline for Phase I, Phase II, and Phase III?**

**A.** Construction for Phase I should begin in 2021. Phase II is planned to begin in spring of 2023. Phase III is planned to begin in spring of 2025.

### **Q. Has the rising costs of building materials influenced the construction timeline?**

**A.** Thankfully, generous in-kind donations of materials/services have minimized the impacted of rising materials costs. For example, Nucor Building Systems (along with Nucor Fastener and Vulcraft Group) donated the steel for the multipurpose building and learning center (Phase I). The donation equates to \$175,000.

Other donors who have offset costs: Pranger Mechanical, Votaw Electric, Sebert Oil Company, Kaufman Well Drilling, John Klopfenstein Furniture & Flooring, Barrett McNagny Attorneys at Law, Vintage Archonics, etc.

### **Q. How will the new multipurpose building and learning center help children come to know Jesus Christ?**

**A.** The new building includes a chapel and dedicated space for worship, biblical studies, group activities and church volunteers. The new space provides a platform to proclaim the hope of Christ through every activity, knitting together all teachings so that each child and family develops a Christian biblical worldview.

### **Q. Is the expansion an expression of the conservative financial history of WCCH?**

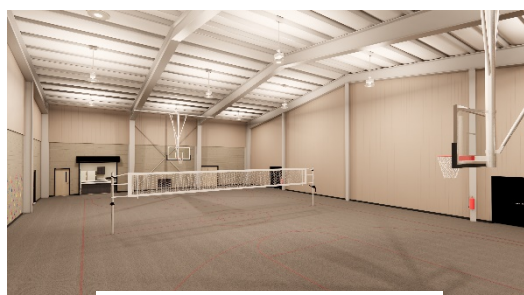
**A.** Yes, the expansion builds upon faith, volunteers, in-kind donations, and careful financial stewardship. Every building project at WCCH provided an opportunity for the Christian community to rally around the goal of helping discouraged children find hope in Christ.

### **Q. Why does the multipurpose building and learning center construction precede a third home for children?**

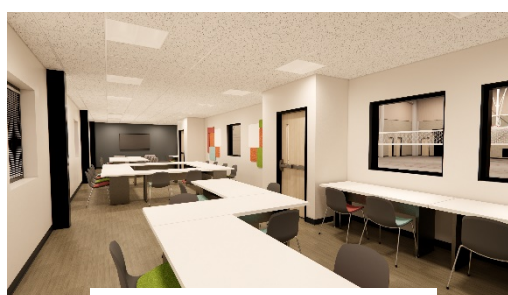
**A.** The new building provides space desperately needed for biblical studies, educational tutoring, life skill training, counseling, team building, and adequate office space. Currently, we are using the basements in the homes. Moreover, the ministry needs recreation and physical fitness resources for the children during the long winter months. The infrastructure of the mission needs development before we add additional children to the mission.

### **Q. How can I give to the capital campaign-building fund? What is a financial pledge?**

**A.** Mail donations to WCCH or donate online at [www.wcchonline.org](http://www.wcchonline.org). Donations can be a one-time monetary gift or a pledge payable over one, two or three years (monthly, quarterly or annually). Pledges provide an opportunity to give sacrificially while paying over time. Please call the office or visit our website to make a pledge.



Physical Fitness



Education Center



Chapel